

Technical Note - TN1001wn

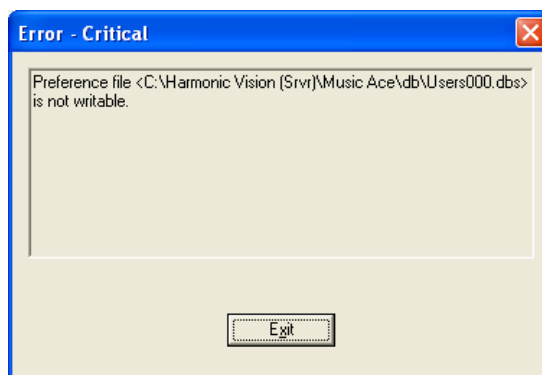
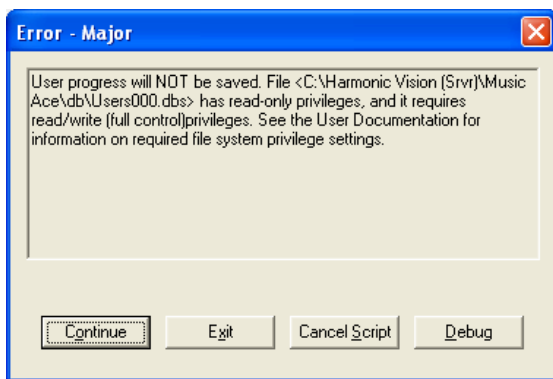
Configuring Music Ace for a Windows XP Limited User Account in a Network Environment

Scope

This technical note applies to all V3.0, V3.1, V3.1.3 and V4.0 Music Ace products (Music Ace, Music Ace 2, Music Ace Starter, Music Ace Deluxe and Music Ace Maestro) running on Windows XP in a *network* environment. For Music Ace products running under Windows XP in a *non-networked* environment please refer to TN1001w.

Overview

When you attempt to run a Music Ace product V3.0, V3.1, V3.1.3 or V4.0 from a limited user account on Windows XP, you may receive an error message similar to one of those shown below.



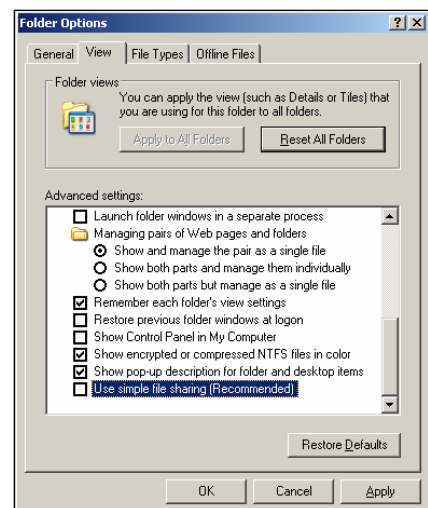
To configure Music Ace to run properly from a Windows XP limited user account, you will need to set file permissions on the network server for the configuration files and student tracking files so that they may be modified from the limited user account.

These instructions assume that you have installed your Music Ace product in the default location specified during installation. If you have installed the product in another location, you will need to make the appropriate changes to the file locations contained in these instructions.

Procedure for Configuring Music Ace for a Windows XP Limited User Account

To establish the proper file permissions for selected Music Ace files, you must set the Windows file folder option to allow Security settings to be modified. From an administrative account, click on **Start – Settings – Control Panel** and select **Folder Options**. On the *Folder Options* screen select the **View** tab and scroll down to the bottom of the Advanced Settings window. The screen should look similar to the one shown here.

Ensure that the checkbox titled “Use simple file sharing” is **NOT** checked, and then click on **Apply** followed by **OK**.



Technical Note - TN1001wn

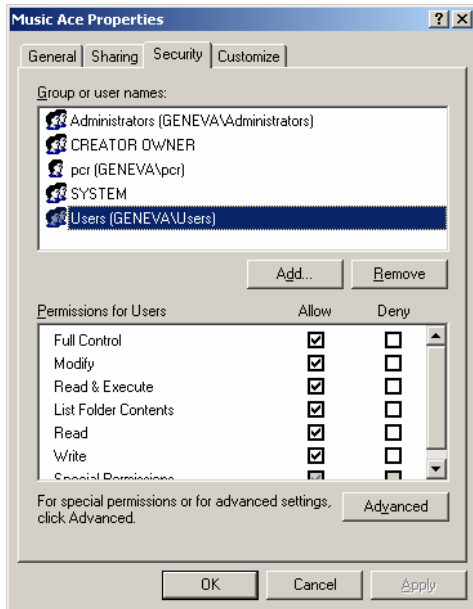
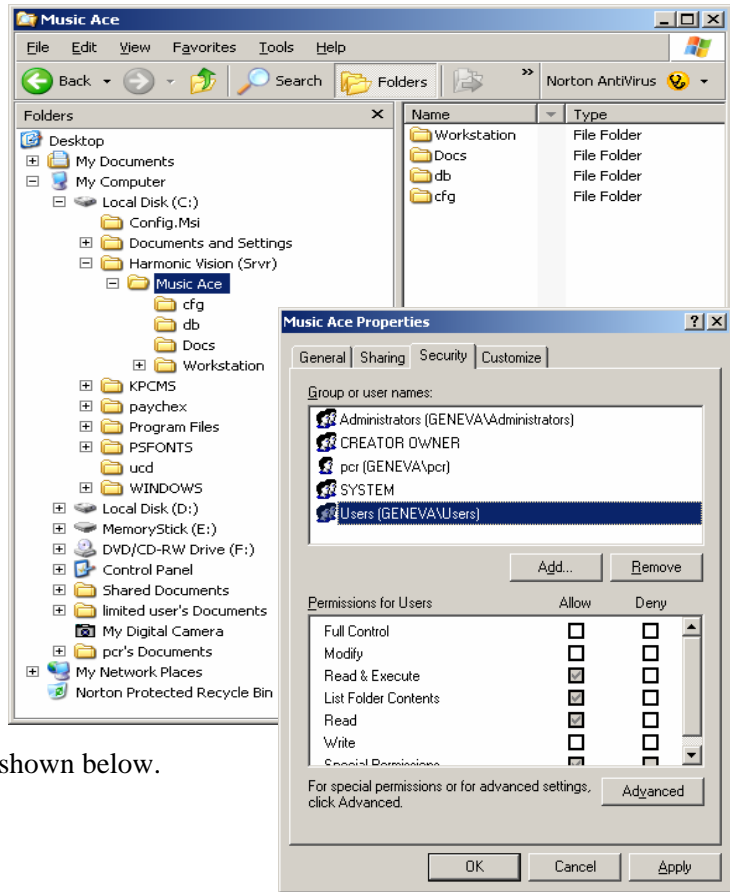
Configuring Music Ace for a Windows XP Limited User Account in a Network Environment

Next, from an administrative account, establish the file permissions to allow Music Ace to modify configuration and student tracking files.

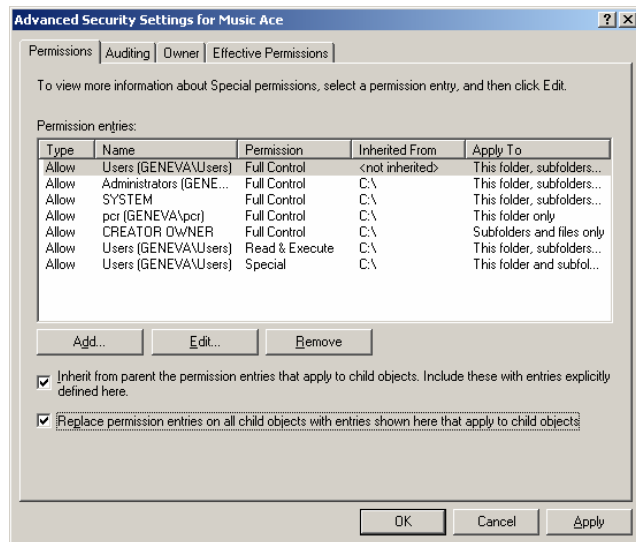
Using Windows Explorer, browse to **C:\Harmonic Vision (Srvr)\Music Ace** on the network server

Right click on the **Music Ace** folder and select **Properties**. On the *Music Ace Properties* window select the **Security** tab. If the Security tab is not shown go back to the previous step and make sure you have properly set the Folder Options.

Select **Users [<computer name>\Users]** in the *Group or user Names* window at the top of the screen. Then, in the *Permissions for Users* window at the bottom, under the **Allow** column, click on the **Full Control** check box. This will create check marks in the **Allow** column as shown below.



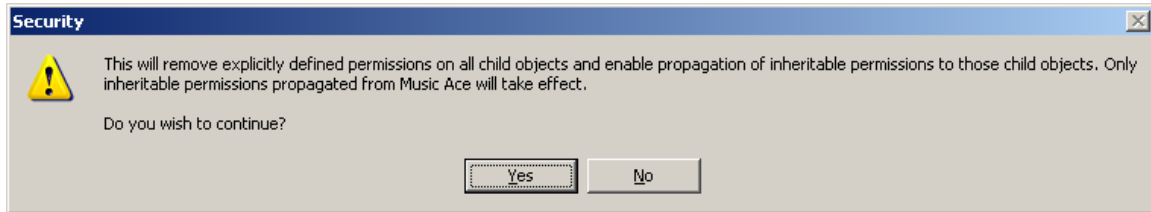
Now click the **Advanced** button. You will see a screen that looks similar to:



Technical Note - TN1001wn

Configuring Music Ace for a Windows XP Limited User Account in a Network Environment

Make sure that both checkboxes at the bottom of the screen are checked, and then click **Apply**. You will then see the following:



Click **Yes** and then click **OK**. You will return to the *Music Ace Properties* screen.

To finish setting file permissions, click **Apply** and then **OK**.

You will now be able to run your Music Ace program from any login on the workstation(s).

